

architect

dominiek depoortere, waregem

client

primary school sint-eloois-vijve & agion

program

PHASE 01

block D - new construction after demolition monastery  
 4 classes, including sanitary (828 m<sup>2</sup>)  
 garden / playground children (326 m<sup>2</sup>)

PHASE 02

block A - renovation & reconfiguration (231 m<sup>2</sup>)  
 elevator (new construction)  
 dormitories and bathroom for existing classes  
 dining room and kitchen

PHASE 03

block B - renovation & reconfiguration (433 m<sup>2</sup>)  
 gymnasium room, including 2 dressing rooms and storage  
 2 classes  
 2 conference rooms  
 office director  
 technical rooms

sustainability

ventilation system D

(mechanical supply and mechanical exhaust)

level of overall thermal insulation of the building

(heat loss per m<sup>3</sup> of a heated building volume)

K-level : K33

level of energy

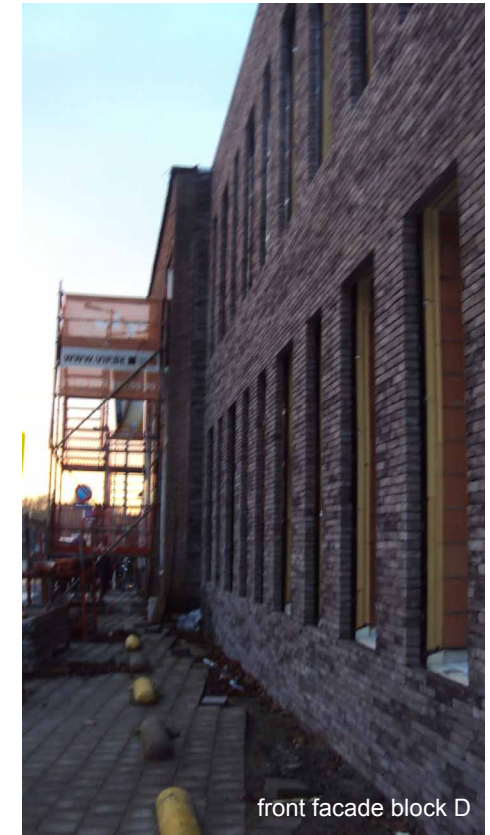
(level of annual primary energy consumption  
 in correlation with heat loss surface, protected  
 volume and ventilation rate)

E-level : E69

attention to access for disabled people, fire-safety, durable  
 materials, safety children in particular, acoustics, daylight-  
 reflection, rainwater-management, ...



placement curtain wall block D



front facade block D



water and windproof-phase block D



demolition phase block D