

9 energy efficient houses in gentbrugge, belgium  
august 2013 - october 2014 (expected)

## architect

gdr-architecten, gentbrugge

## client

social housing of ghent (woningent)

## program

4 houses (block A&B) - 4 bedrooms

2 houses (block D) - 2 bedrooms

3 houses (block E) - 3 bedrooms

## sustainability

airtightness  $V50(m^3/h) < 6 m^3/h\cdot m^2$

ventilation system C+

*(ventilation grid supply and mechanical exhaust)*

level of overall thermal insulation of the building

*(heat loss per  $m^3$  of a heated building volume)*

K-level : range K36 - K44

level of energy

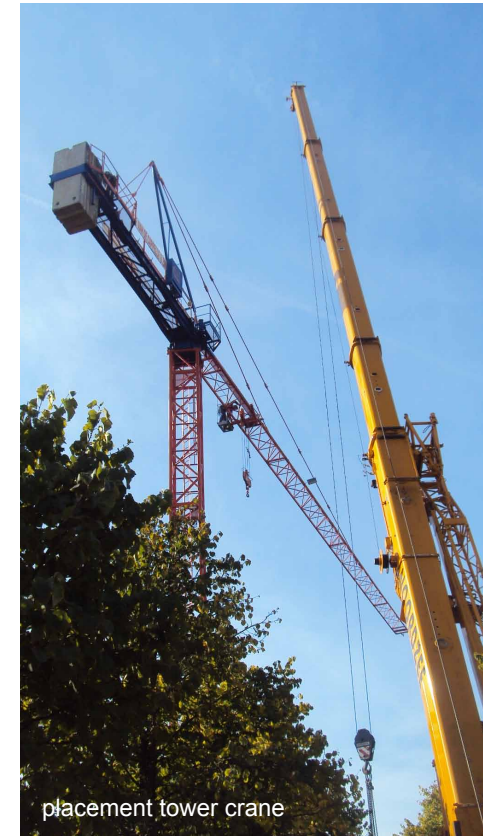
*(level of annual primary energy consumption  
in correlation with heat loss surface, protected  
volume and ventilation rate)*

E-level : range E64 - E80

attention to acoustics-performance, access for disabled  
people, budget, rainwater-management, durable materials  
and sustainable design, compact technical installation, ...



pile foundation



placement tower crane



demolition-phase



detail sewerage



construction phase